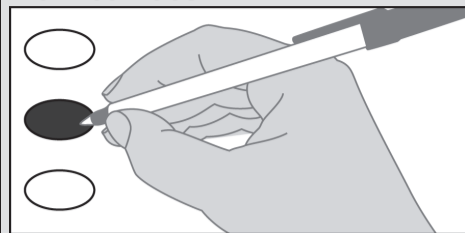


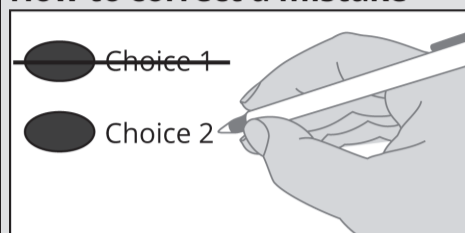
**Instructions**

**How to vote**



Use a black ink pen to completely fill in the oval next to your choice.

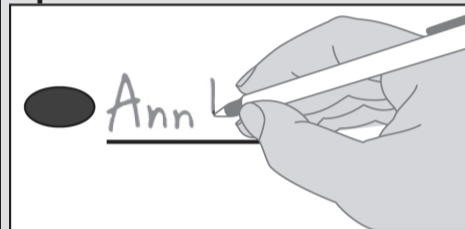
**How to correct a mistake**



To make a correction, draw a line through the entire choice.

You then have the option of making a different choice by completely filling in another oval.

**Optional write-in**



To add a new candidate, fill in the oval next to the write-in line and print the name on the write-in line.

**State**

**Advisory Votes**

**Advisory Vote No. 16**  
**Engrossed Substitute House Bill 1597**

The legislature increased, without a vote of the people, the food fish excise tax rate on certain salmon and game fish, costing less than \$1,000,000 in the first ten years, for government spending.

This tax increase should be:

- Repealed
- Maintained

**Advisory Vote No. 17**  
**Engrossed House Bill 2163**

The legislature expanded, without a vote of the people, the business and occupation tax and narrowed certain retail sales and use tax exemptions, costing \$565,000,000 in the first ten years, for government spending.

This tax increase should be:

- Repealed
- Maintained

**Advisory Vote No. 18**  
**Engrossed House Bill 2242**

The legislature imposed, without a vote of the people, an additional state property tax for common schools, costing \$12,949,000,000 in the first ten years, for government spending.

This tax increase should be:

- Repealed
- Maintained

**County**

**King County**  
**Proposition No. 1**  
**Levy Lid Lift for Veterans, Seniors and Vulnerable Populations**

The King County Council passed Ordinance 18555 concerning funding for veterans, seniors and vulnerable populations. If approved, this proposition would replace an expiring levy and fund capital facilities and regional health and human services for veterans and military servicemembers and their families, seniors and their caregivers, and vulnerable populations. It would authorize an additional property tax for six years beginning with a 2017 rate of \$0.10 per \$1,000 of assessed valuation for collection in 2018. The first year levy amount would be the base for computing annual increases up to 3.5% for collection in 2019 through 2023, as provided in Ordinance 18555. Should this proposition be?

- Approved
- Rejected

**County**

**Executive**  
 nonpartisan office  
 vote for one

- Dow Constantine
- Bill Hirt
- \_\_\_\_\_

**Sheriff**  
 nonpartisan office  
 vote for one

- Mitzi Johanknecht
- John Urquhart
- \_\_\_\_\_

**Court of Appeals, Division No. 1, District No. 1**

**Judge Position No. 2**  
 nonpartisan office  
 vote for one

- Michael S. Spearman
- Nathan W. S. Choi
- \_\_\_\_\_

**Judge Position No. 5**  
 unexpired 3-year term  
 nonpartisan office  
 vote for one

- David Mann
- \_\_\_\_\_

**Port of Seattle**

**Commissioner Position No. 1**  
 nonpartisan office  
 vote for one

- John Creighton
- Ryan Calkins
- \_\_\_\_\_

**Commissioner Position No. 3**  
 nonpartisan office  
 vote for one

- Stephanie Bowman
- Ahmed Abdi
- \_\_\_\_\_

**Commissioner Position No. 4**  
 nonpartisan office  
 vote for one

- Preeti Shridhar
- Peter Steinbrueck
- \_\_\_\_\_

**City**

**City of Seattle**  
**Mayor**  
 short and full term  
 nonpartisan office  
 vote for one

- Jenny Durkan
- Cary Moon
- \_\_\_\_\_

**City of Seattle**  
**City Attorney**  
 nonpartisan office  
 vote for one

- Pete Holmes
- Scott Lindsay
- \_\_\_\_\_

**City**

**City of Seattle**  
**Council Position No. 8**  
nonpartisan office  
vote for one

**Teresa Mosqueda**

**Jon Grant**

\_\_\_\_\_

**City of Seattle**  
**Council Position No. 9**  
nonpartisan office  
vote for one

**M. Lorena González**

**Pat Murakami**

\_\_\_\_\_

**School**

**Seattle School District No. 1**  
**Director District No. 4**  
nonpartisan office  
vote for one

**Eden Mack**

**Herbert J. Camet, Jr.**

\_\_\_\_\_

**Seattle School District No. 1**  
**Director District No. 5**  
nonpartisan office  
vote for one

**Zachary Pullin DeWolf**

**Omar Vasquez**

\_\_\_\_\_

**Seattle School District No. 1**  
**Director District No. 7**  
nonpartisan office  
vote for one

**Betty Patu**

**Chelsea Byers**

\_\_\_\_\_

**End of Ballot**

Sample